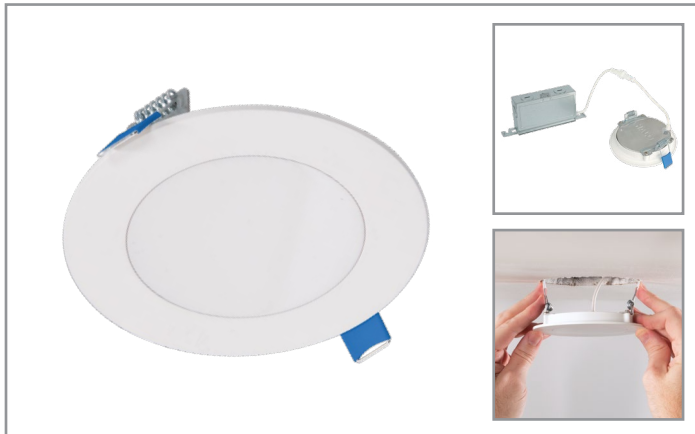


Project		Catalog #		Type	
Prepared by		Notes		Date	



HALO

HLBSL4

4-inch Canless LED Downlight with Remote Driver/Junction Box

Typical Applications

Residential

Interactive Menu

- Order Information page 2
- Product Specifications page 2
- Photometric Data page 3
- Energy & Performance Data page 3
- Product Warranty
- Dimming Guide

Product Certification*



Refer to ENERGY STAR® Certified Products List.
Can be used to comply with California Title 24 High Efficacy requirements.
Certified to California Appliance Efficiency Database under JAB.

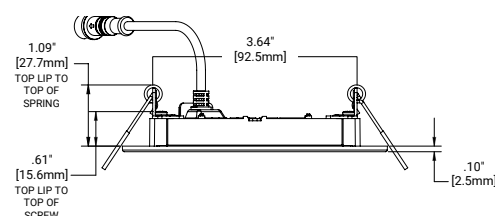
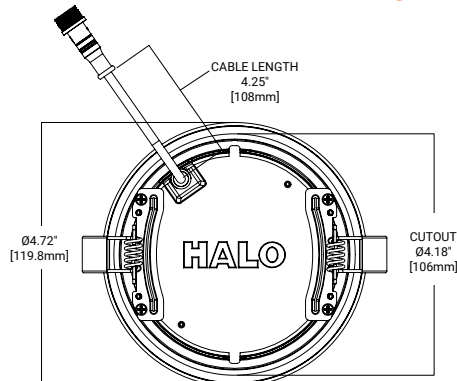
Product Features



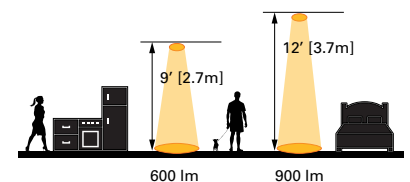
Top Product Features

- Round 4" canless downlights suitable for installation in IC (insulation contact) and non-IC applications
- Canless springs fit ceilings between 3/8" – 5/8" thick
- **Lens & Trim:** Slim canless LED downlight with a smooth lens
- **Color Temperature (CCT):** 5-color Field-Select CCTable (2700K, 3000K, 3500K, 4000K, 5000K); 90+ CRI
- **Brightness (Lumens):** up to 600 lm (nominal)
- **Dimming:** Dims to 10% (phase cut LE/TE); 120V input
- AIR-TITE, wet location-listed, and ENERGY STAR®
- 35,000 hrs of maintenance-free operation in wet locations
- 5-year warranty

Dimensional and Mounting Details



Scale



[additional product diagrams](#)

Order Information

Catalog Number	Description	Lumens (nominal)	CRI	CCT	Driver	Finish
HLBSL406FS5	4-inch Round Canless LED Downlight	600 lumens	90+ CRI	5-Color Field-Selectable CCT Table: 2700K, 3000K, 3500K, 4000K, 5000K	10% Phase Cut LE/TE Dimming, 120V 60Hz	Matte White

Accessories (sold separately)

Accessories		
HLB4RTRMMW = 4" round decorative overlay, matte white HLB4RTRMMB = 4" round decorative overlay, matte black HLB4RTRMSN = 4" round decorative overlay, satin nickel HLB4RTRMTBZ = 4" round decorative overlay, tuscan bronze	New Construction Mounting Frames* MF4RC = 4" Round Mounting Frame with Drywall Collar HL4RSMF = 4" Round or Square Mounting Frame New Construction Smash Plate* SP346RS = 3", 4", and 6" Canless New Construction Smash Plate	Extension Cables HLB06FSEC = 6 ft. Extension Cable HLB12FSEC = 12 ft. Extension Cable HLB20FSEC = 20 ft. Extension Cable



HLB4RTRMMW
White (Paintable), Splay



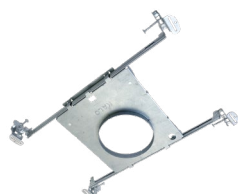
HLB4RTRMMB
Matte Black, Splay



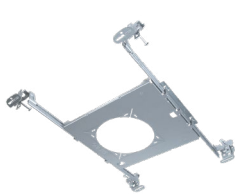
HLB4RTRMSN
Satin Nickel, Splay



HLB4RTRMTBZ
Tuscan Bronze, Splay



MF4RC



HL4RSMF



SP346RS

* When installing with HALO Canless Mounting Frames or smash plate, RLFR junction boxes must be mounted to framing.

Product Specifications

Module

- Plastic frame with integral flange provides passive thermal cooling achieving L70 at 35,000 hours in IC and non-IC applications

Optics

- Precision acrylic light guide organizes source flux into wide distribution with 1.28 spacing criteria, useful for general area illumination

LED Array

- Plurality of mid power LED's provides a uniform source with high efficiency and long life
- Available in 90 CRI minimum, R9 greater than 50 provides high color rendering
- Field selectable color temperature (5 colors)
 - 2700K, 3000K, 3500K, 4000K, 5000K
 - Color Temperature (CCT) is set to a factory default of 3000K
- Meets ENERGY STAR® color angular uniformity requirements, deviation is less than 0.006 u' v'

Remote Driver / Junction Box

- Die formed metal driver / junction box with captive hinged junction box cover
- Listed for (6) #12 AWG 90° C splice conductors, 2-in, 2-out plus (2) ground
- (4) 1/2" conduit pry-outs
- Accepts 14-2, 14-3, 12-2, 12-3 U.S. and 14-2, 14-3, 12-2 Canadian NM cable
- (3) wire nuts for quick and reliable mains voltage connections
- Integral mounting facilitates direct mounting to building structure or mounting frame

Driver

- 120V 60 Hz constant current driver provides noise free operation
- Continuous, flicker-free dimming from 100% to 10% with select leading or trailing edge 120V phase cut dimmers

Installation

- Can be installed in 3/8" to 5/8" thick ceilings
- Round ceiling cutout
- Heat treated springs hold fixture fitting securely in the ceiling eliminating light leaks
- Housing is less than 1/2" thick and can span a 2" nominal framing member
- Can be removed from below the ceiling for service or replacement

Compliance

- cULus certified type IC suitable for direct contact with air permeable insulation
- Not recommended for use in direct contact with spray foam insulation, reference NEMA LSD57-2013
- Wet location listed and IP44 ingress protection
- Airtight per ASTM-E283-04
- Suitable for use in clothes closets when installed in accordance with the NEC 410.16 spacing requirements
- EMI/RFI emissions per FCC 47CFR Part 15 consumer limits
- Contains no mercury or lead and RoHS compliant
- Photometric testing in accordance with IES LM-79-08
- Lumen maintenance projections in accordance with IES LM-80-08 and TM-21-11

- Can be used for State of California Title 24 high efficacy LED compliance under JA8, reference Modernized Appliance Efficiency Database System (MAEDBS) for 2022 JA8 High Efficacy Lighting
- ENERGY STAR® certified, reference "Certified Light Fixtures" database

Warranty

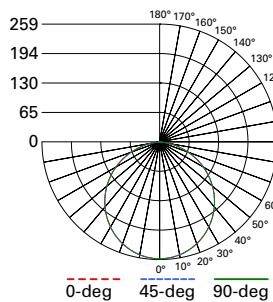
- Five year limited warranty, consult website for details. www.cooperlighting.com/warranty

Energy Data

Lumens (nom)	600
Input Voltage (VAC)	120
Input Current (A)	0.074
Efficiency (LpW)	95.7
Inrush Current (A)	2.52
Inrush Duration (ms)	0.019
THD	≤ 20%
PF	≥ 0.90
T Ambient (C)	-30 to +40
Sound Rating	≤ 22 dba

CCT	Watts	Lumens	LPW	CRI
2700K	8.3	720	86.7	93
3000K	8.3	725	87.3	93
3500K	8.5	710	83.1	93
4000K	8.5	705	83.0	93
5000K	8.3	690	83.2	93

Photometric Data



HLBSL406FS5-3000K

Spacing criterion:
(0-180) 1.25 | (90-270) 1.25 | (Diagonal) 1.37
Beam Angle: 112°
Field Angle: 160°
Lumens: 725
Input Watts: 8.3 W
Efficacy: 87.3 LPW
UGR: 21
Test Report: P869793

Zonal Lumen	Lumens	% Lumens
0-30	200	27.6
0-40	328	45.2
0-60	578	79.8
0-90	725	100

TM-30-15	Rf = 92
	Rg = 99
CRI/CIE	Ra = 95.5
	R9 = 83

CCT - Range of 2700K- 5000K

112°

Dimensional Details

